

# STANDARD: FIBERGLASS WOOL

High performance

2"X6" WALL WITH 5 1/2" FIBERGLASS WOOL INSULATION

**32,6** R-TOTAL INSULATION FACTOR

Optional: Very high performance

2"X8" WALL WITH 7 1/2" FIBERGLASS WOOL INSULATION

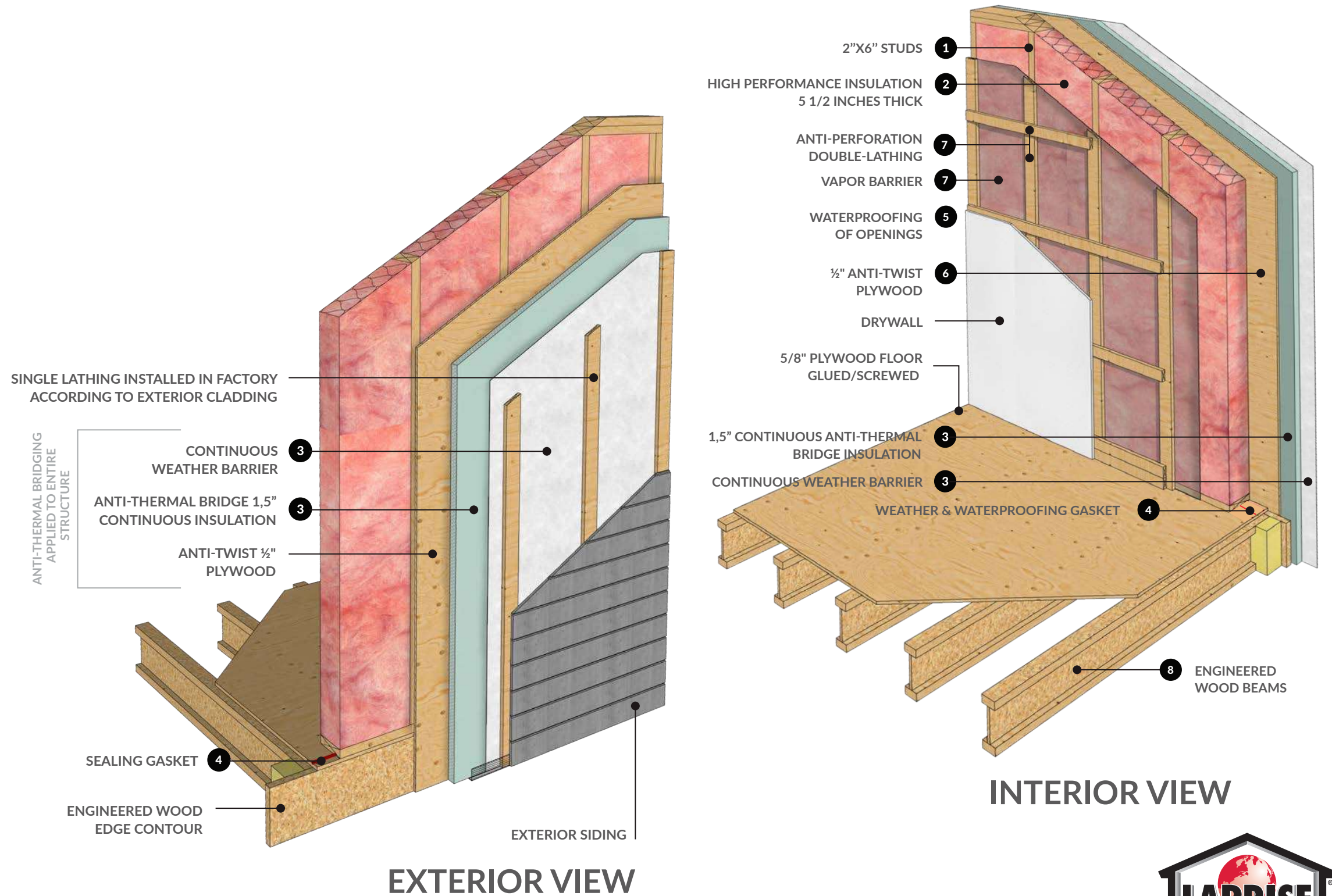
**38,7** R-TOTAL INSULATION FACTOR

# OPTION: ROCK WOOL



# LAPRISE WALL

MORE EFFICIENT AND ECOLOGICAL THAN EVER

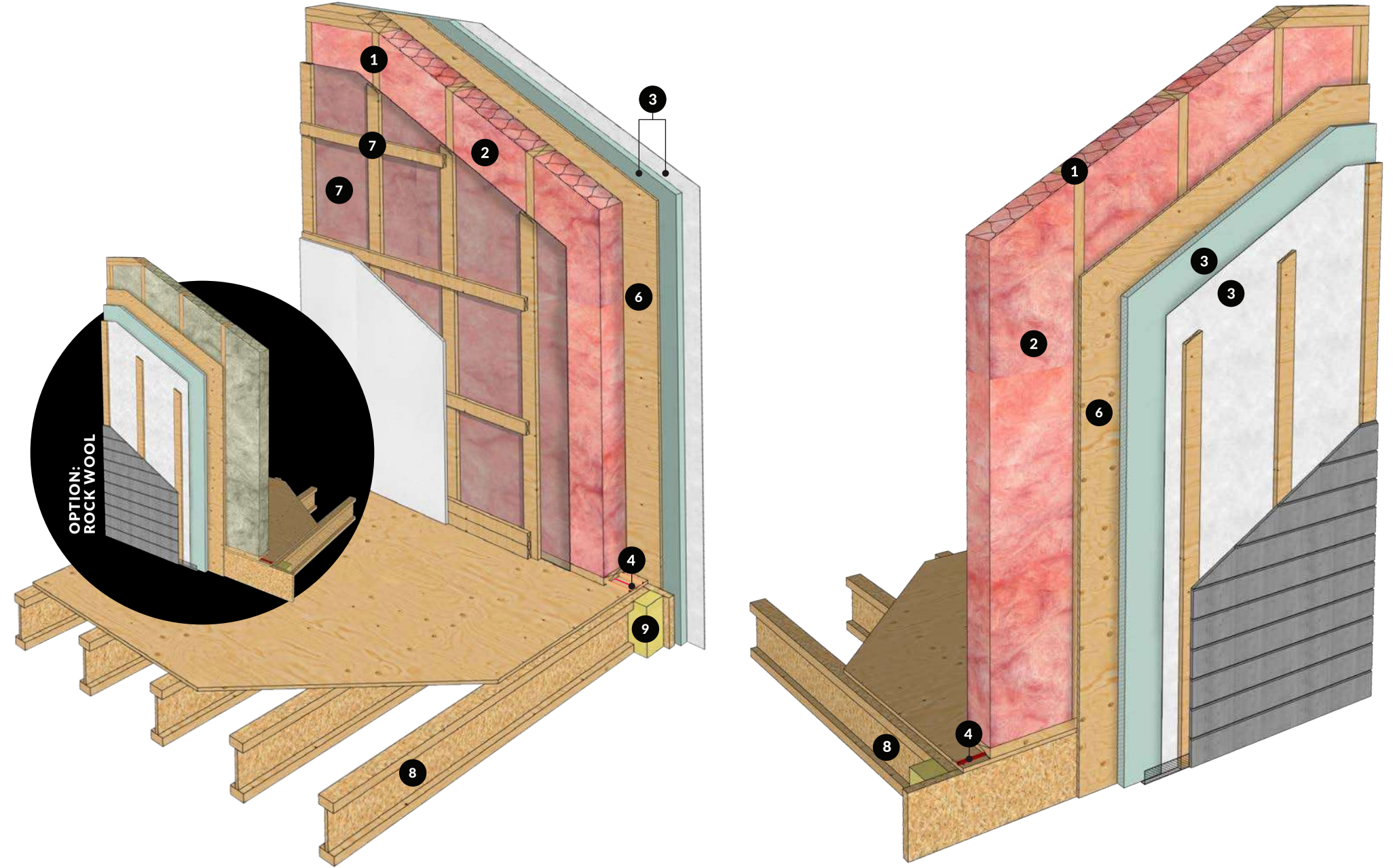




# LAPRISE WALL

MORE EFFICIENT AND ECOLOGICAL THAN EVER

- 1 HIGH PRECISION PRE-ENGINEERED WALL SYSTEM**  
 Factory-assembled walls in an optimized, automated and controlled environment which ensures superior quality, strength and precision. The advanced level of prefabrication allows for greater speed and efficiency during site installation.  
**STANDARD:** Studs in 2"x6" positioned at 16" c-c.  
**OPTIONAL:** Studs in 2"x 8" positioned at 16" c-c.
- 2 HIGH PERFORMANCE INSULATION**  
 5 1/2" fiberglass wool insulation factory-installed in the walls provides thermal comfort and significant energy savings. Factory-installed polythene protection to safeguard insulating wool.  
**STANDARD:** Fiberglass wool 5 1/2 inch thick  
**OPTIONAL:** Fiberglass 7 1/2 inch thick
- 3 ANTI-THERMAL BRIDGE EXTERIOR CONTINUOUS INSULATION**  
 Rigid 1.5" continuous anti-thermal bridge and weather barrier insulation factory-installed covering the entire surface of the exterior walls (including the junction between the wall and the top plate and the floor junction) for maximum airtightness and waterproofing.
- 4 SEALED JOINTS**  
 High-performance acoustic sealant under wall bottom plate as well as at the floor/ceiling junction to prevent air and humidity infiltration with a view to maximize waterproofing.
- 5 SEALING OF ALL OPENINGS**  
 Factory-installed waterproofing membrane to seal the perimeter of the windows to further protect against bad weather and infiltrations.
- 6 SOLID ANTI-TORSION PLYWOOD**  
 Continuous 1/2" thick plywood covering the entire surface of the exterior walls as well as the junction between the wall and the top plate ensuring structural stability and resistance as well as optimal bracing.
- 7 DOUBLE LATHING AND VAPOR BARRIER**  
 Continuous vapor barrier onto which a double-lathing system is installed to facilitate the passage of electrical wires, which helps to considerably reduce the risk of perforation of the vapor barrier.
- 8 I-BEAMS**  
 Engineered wood I-joists stand out for their durability, increased strength and the reliability in terms of structural stability.
- 9 INSULATION OF THE EDGE BELT**  
 Edge belt insulation, sprayed urethane.



## STANDARD: FIBERGLASS WOOL

**High performance**  
**2"X6" WALL WITH 5 1/2" FIBERGLASS WOOL INSULATION**

**32,6** R-TOTAL INSULATION FACTOR

**Option: Very high performance**  
**2"X8" WALL WITH 7 1/2" FIBERGLASS WOOL INSULATION**

**38,7** R-TOTAL INSULATION FACTOR

